

Llyn Peninsula 2013

ECSAC Tours

Trip Guide



Friday 20th September 2013 to Sunday 22nd September 2013

Prepared By Steve Welton

CONTENTS

Essential Information

Equipment List

The Challenger

The Timbo

The Glenocum

Caravan Rock

Essential Information

Friday 20th September 2013

For Dive club members staying over.

Travel to Pwllhelli on the Llyn Peninsula

Check into Campsite or B&B

Meet at the Glyn - Y- Weddw Pub LLanbedrog for drinks approx 9pm

Saturday 21st September 2013

Breakfast

Meet at Pwllhelli Marina public slipway

Welcome any day trip club members

High Water 09.50 am BST

Boat dive on the wreck of the Challenger

Surface Interval

Boat dive on the wreck of the Timbo

Recover boats

Arrange air fills for Sunday

Meet at The Crown Pub in Pwllhelli for drinks to discuss diving on Sunday

Sunday 22nd September 2013

Breakfast

Pack up at campsite or B&B

Meet at Aberdaron slipway

Welcome any day trip club members

High Water 10.30am BST

Boat dive Caravan Rock

Surface Interval

Boat dive wreck of the Glenocum

Recover boats

Travel back home stopping off for drinks on the way

The above itinerary is only a suggested plan and subject to weather conditions and visibility.

Bailout dives to be North side of the llyn peninsula e.g. Porth Ysgaden outer reef, wreck of the Cyprian, Rock face under coastguard station, Maen melt, Porth Newry, or worst case Vivian Quarry Llanberis

Pwllhelli Today

Pwllhelli is the unofficial capital of The Llyn Peninsula, in Northwest Wales. Much of The Llyn Peninsula is an Area of Outstanding Natural Beauty, and Pwllhelli is an ideal base to explore this area, as well as nearby Snowdonia, Anglesey and the western coast of Wales.

Pwllhelli is a busy market town with a weekly market on Wednesday in Y Maes. The market is one of the busiest in Britain, and you're bound to find a good bargain! Also in the town centre you will find many shops, selling everything you need. The town is full of seaside character.

The impressive new marina is now one of the best in Wales, with 24 hour access and all the services boaters need. The marina berths over 400 boats and there is space for visitors to moor up overnight. The marina has brought many more boaters to Pwllhelli and helped other aspects of tourism in the area.

Pwllhelli has two beaches. South Beach, which is mainly shingle, has been awarded the Blue Flag Award for clean sands and waters. South Beach stretches from Gimblett Rock, across the promenade, and around towards Llanbedrog.



Glan-y-mor is the other beach at Pwllhelli and is located at the rear of the marina workshops and compounds. This beach, near the harbour mouth is quite muddy at low tide, however, a little further along the beach, the sand is much better. The beach runs for 3 miles towards Pen-y-chain headland, which is the site of the Haven Holiday Camp.

Abersoch, 7 miles away is one of Wales' top sailing venues. About 7 miles in the opposite direction brings you to Llanystumdwy, just outside Criccieth, the childhood home and burial place of Lloyd George. Porthmadog is 14 miles to the east of Pwllhelli and is truly the gateway to Llyn, and has a picturesque harbour and lots of shops.

The Llyn Peninsula is very different to the rest of Wales, the weather is often different (usually better!) and so is the landscape. Much of Llyn is rolling countryside, rising up to the occasional volcanic peak – needless to say that these are all now extinct. The

highest of which is Yr Eifl, on the north coast of Llyn. There are also other hills on Llyn, all worth a climb, like Carn Fadryn, Mynydd Rhiw and Garn Boduan, to name a few. All the hills give excellent views over Llyn and on a clear day, Snowdonia, all of Cardigan Bay and Anglesey up to Holyhead Mountain.

Camp Sites in & Around Pwllheli

Bodwrog Campsite (Highly Recommended)
Fee's £18 per night
LLanbedrog
Pwllheli
LL53 7TH
Tel: 01758 740 341

Tynrhos Mynytho Campsite
Bunk House's 2, 3, 5 Berth Self Catering £10.50 per night
Camping £8 per night
Dive gear washing & drying facilities
Double filtered air fills
LL53 7PS
Tel: 01758 740 712

B & B

The Crown Hotel
37 – 39 High Street
Pwllheli
LL53 5RJ
Tel: 01758 612 664
Double en suite room £75 per night
Single en suite room £50 per night

Shops in Pwllheli

A large array of shops is available in Pwllheli from antiques to work wear

Asda
Sand street
Pwllheli
LL53 5RT
Opening times
Mon – Sat: 7am to 10pm
Sun 10am to 4pm

Spar Shop
Caernarfon Road
Pwllhelli
LL53 5LF
Opening times
7 days 7am to 11pm

Londis
LLanbedrog
LL53 7UB
Opening times
7 days 7am to 7pm

Nearest Petrol Station

BP Station
Caernarfon road
Pwllhelli
LL53 5LF
Open 7am to 11pm 7 days

Esso station
Ala Road
Pwllhelli
LL53 5TA
Open 8.30 am to 6pm Mon – Fri
Open 9am to 6pm Sat – Sun

Nearest Hospitals

Bryn Beryl Hospital (Minor injuries only)
Pwllhelli
Tel: 01758 701 122

Ysbyty Gwynedd (Full A + E)
Bangor
Tel: 01248 384 384

Nearest Pharmacy

Rowlands
60 High street
Pwllhelli
LL53 5RR
Tel: 01758 612 656

Nearest Bank ATM Machine

HSBC
48 High street
Pwllhelli
LL53 5SE

NatWest
34 High street
Pwllhelli
LL53 5WY

Places to Eat / Takeaway

Glyn – Y – Weddw Arms
Abersoch road
LLanbedrog
LL53 7TH
Tel: 01758 740 212

The Ship Inn
Ffordd Pedrog
LLanbedrog
LL53 7PE
Tel: 01758 741 111

Fish & Chip Shop
Sand street
Pwllhelli
LL53 5HX

Peckish Kebab & Pizza
78 High street
Pwllhelli
LL53 5RR

Taxi

Geoff's Taxi : 07812 082 223
Al's Taxi six seater : 07817593979

Air Fills

Tynrhos Campsite
Pwllhelli
LL53 7PS
Tel: 01758 740 712

Vivian Quarry
LLanberis
LL53 4TY
Tel: 01286 870 889

Equipment Check List

Scuba Equipment

- . Mask
- . Fins
- . Snorkel
- . Hood
- . Gloves
- . BCD / Wing
- . 2 x Air cylinders
- . Regulators with alternate air source
- . Cam Bands
- . Compass
- . Dive Computer
- . Torch
- . Dry Suit
- . Under Suit or thermals
- . Weight Belt (additional weight for salt water diving)
- . Dive Knife
- . DSMB & Reel

Recommended Accessories

- . Spare batteries for torch
- . Chargers for torch & Mobile Telephone
- . Underwater slate & pencil
- . Spare parts kit (o-rings, fin straps, mask strap etc)

Camping Equipment

- . Tent, poles, pegs,
- . Air bed & pump or foam mat
- . Sleeping bag, pillow
- . Gas cooker, spare gas, kettle, pans, cutlery
- . Wind break
- . Folding chair
- . Brewing gear, flask
- . Torch or lamp
- . Water bottle
- . Beer, Wine, Spirits & mixers

Medical / First Aid Items

- . Prescription medicines
- . Antibacterial cream
- . Sun cream / after sun
- . Aspirin / other pain relief
- . Plasters

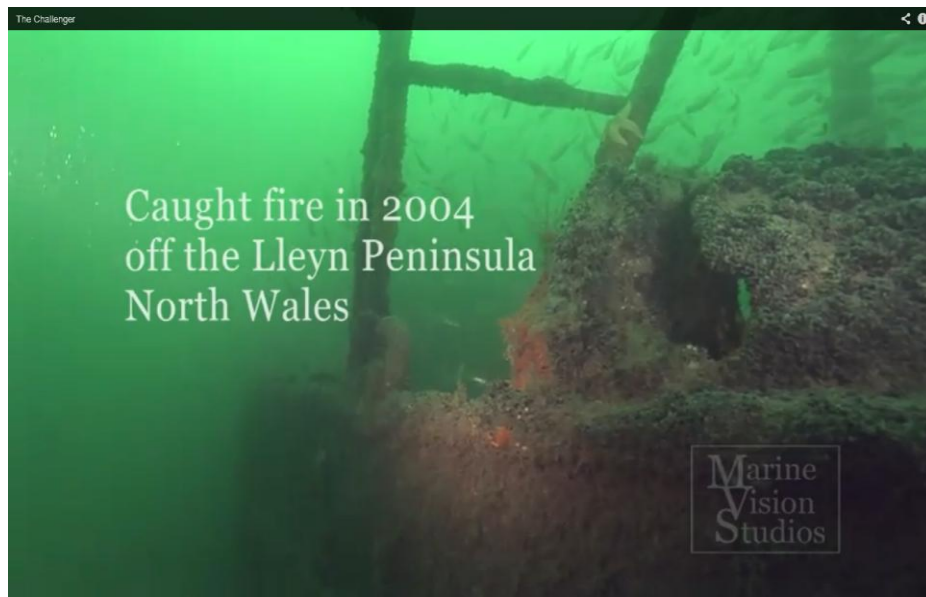
Photographers / Underwater Photographers

- . Camera
- . Camera housing
- . Filters
- . Strobe
- . Lenses
- . Memory cards
- . Chargers / batteries
- . Lens cleaner / cloth

Last Minute Check List

- . Spare cloths
- . Dive kit
- . Toiletries
- . Camping kit
- . Camera kit
- . Money
- . Credit / debit card
- . Basic food provisions

The Challenger



This lobster fishing boat is approximately 12 metres long and lies in an average depth of 20 metres.

The sea bed is silty and is very easily disturbed so good buoyancy control and fining technique is a must.

Extra care needs to be taken in low viz conditions as the wreck has a large gantry which is easy to get caught in when ascending to the surface from the wreck.

This wreck is known to locals but seldom dived as the coordinates are not readily available. There is also a great deal of life on and around the wreck.

A special thanks to Paul Tyres and Chris Holden for helping to get the coordinates.

The fishing boat sank in 2004 after a fire started on board. Many rumours have been started over the years regarding the circumstances of the boat going down. The official line is that a fire started and all hands abandoned the vessel without loss of life. A nice insurance claim none the less.

There is a video of the wreck on you tube which was taken in 2010.

The Timbo



The Timbo was built in Newcastle 1882 and first ran into trouble in 1920 when it was stranded high and dry on Dinas Dinelle beach near Caernarfon. During the rescue attempt by Roscolyn lifeboat, five members of the life boat crew lost their lives along with four members of the Timbo crew.

A memorial to the sacrifice made by the lifeboat crew members can be seen in Roscolyn churchyard near Holyhead. The Timbo was finally recovered after a wooden ramp was constructed and assisted by tugs she was refloated.

She met her end after leaving Pwllhelli in darkness on the 15th November 1922 and hitting the reef at Carreg-y-traif. The crew abandoned ship and everyone reached the shore without loss of life.

Even without the lure of the wreck, this is an excellent dive site with a variety of life including sponges, fan worms, pollack, wrasse, blennies and even the odd seal checking you out.

The maximum depth is 14metres and is best dived at low water slack.

The Glenocum



Glenocum was deliberately beached after hitting a rock in 1883 in an attempt to recover the cargo and to repair the ship. Operations continued all summer but all hope of saving the ship had been lost and work was abandoned. The wreck and the remaining fittings were sold for £70.

The Glenocum provides an excellent introduction to wreck diving, being shallow, out of the main current and close to the shore. One of the main prominent features is the scotch boiler which has a resident conger eel in one of the copper tubes.

Pipefish, pout, ballan wrasse and prawns are very common around this wreck usually hiding in the thick kelp.

Maximum depth is 10 metres and can be dived at any state of the tide.

Caravan Rock

Towards the southwest corner of Aberdaron bay there is a submerged rock about the size of a static caravan. It lies on the edge of the underwater shelf in the bay just before the seabed drops away into bardsey sound. The rock has vertical sides of about 4 to 5 metres with a flat top measuring about 6 metres by 8 metres.

The site has often been described as eerie or unnatural, probably because the rock looks totally out of place.

Again lots of life including spotted gobbies, wrasse, pollack and dead- mens fingers clinging to the vertical sides.

Maximum depth is 14 metres to the seabed. The site is best dived at high water slack.